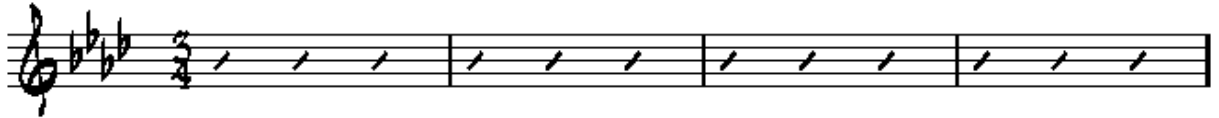


MELO-SLOW JAZZ WALTZ

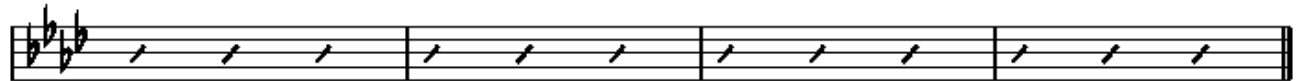
五宮

COMP. TAPPY

INTRO F#m11 Dbmaj7/F F#m11 Dbmaj7/F



F#m11 Dbmaj7/F F#m11 Dbmaj7/F



5

A F#m Dbm7(+5) F#m



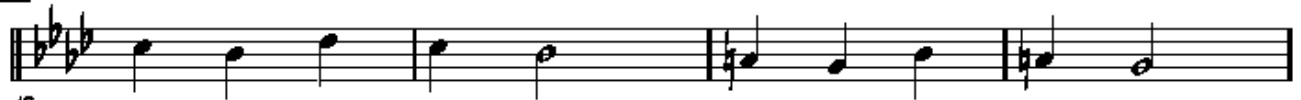
9

Bbm Dbm7 Abm7 Gbm7



13

B Ebm7(11) Cm7(11)



17

Bbm7(11) Gb9/8b



21

C F/Eb Gb/C



25

Gb/E



29